

Area of Application:
Bench/Table mounted
Hot and cold water

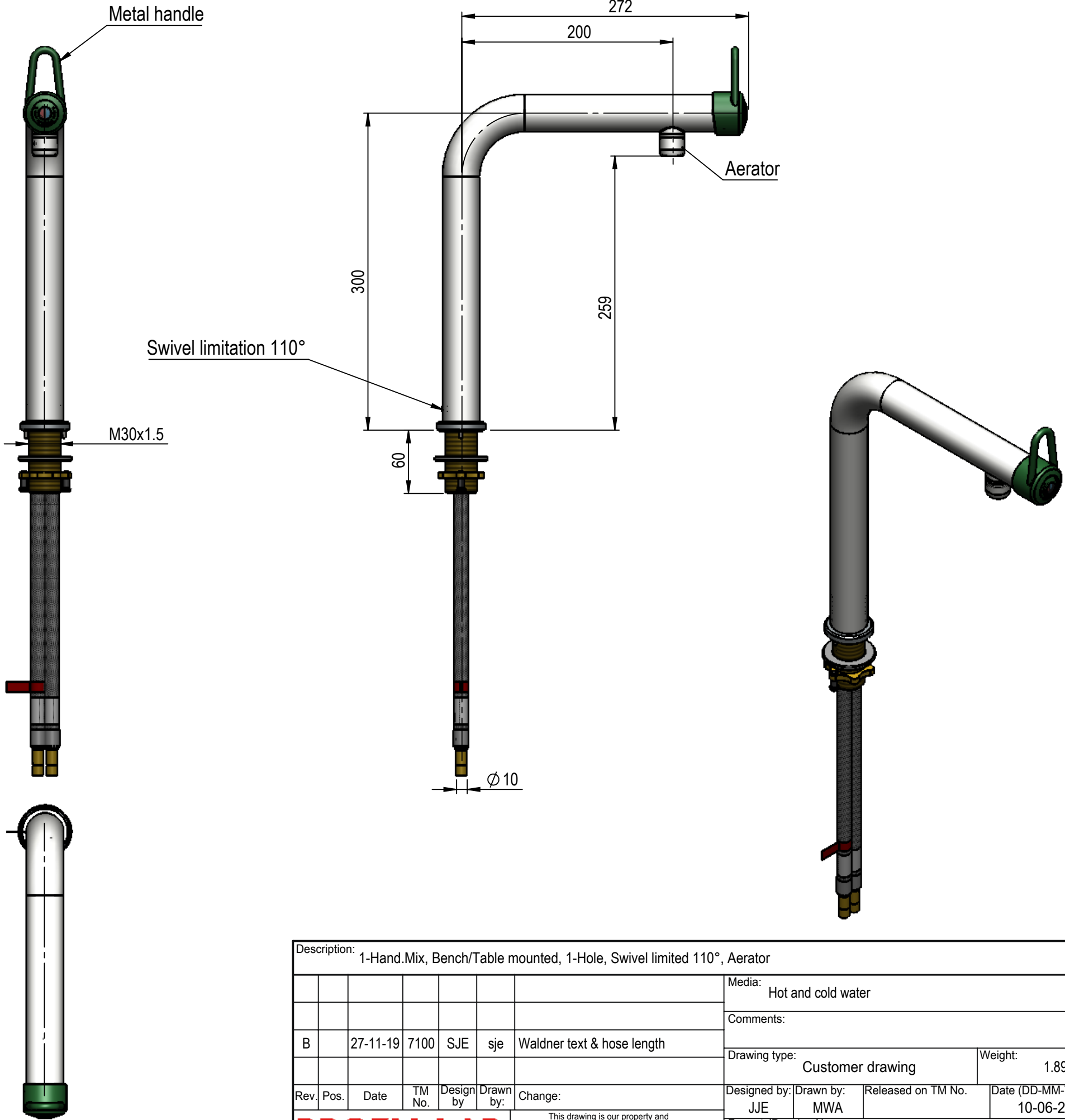
Max. working pressure 10 bar
Temperature range 5°C-65°C

Details:
Ceramic cartridge open/close 22,5°, mix. function ±45°
Red and blue media indication on handle
Swivel limited 110°
Aerator

Materials in media contact:
Brass
Rubber, EPDM
Silicone based lubricant
Ceramic
SPX (Soft PEX)

Mounting:
M30x1,5mm (See 94G0232)

Inlet / outlet connection:
DN8 hose with Ø10mm inlet
Aerator



MEDIA CODE XX FOR WATER ONE HANDLE MIXER		
Media	Media description	Media code XX
WPT	Water potable tempered	35
WNT	Water non-potable tempered	37

Description: 1-Hand.Mix, Bench/Table mounted, 1-Hole, Swivel limited 110°, Aerator										
							Media: Hot and cold water			
							Comments:			
B		27-11-19	7100	SJE	sje	Waldner text & hose length				
							Drawing type: Customer drawing		Weight: 1.895 Kg	
Rev.	Pos.	Date	TM No.	Design by	Drawn by:	Change:	Designed by: JJE	Drawn by: MWA	Released on TM No. MWA	Date (DD-MM-YY): 10-06-20
BROEN-LAB						This drawing is our property and cannot be given to a third party, copied or otherwise used without our permission. BROEN-LAB A/S.	Format: A3		Drawing No.: 253527110XX-52B	

BROEN-LAB

This drawing is our property and cannot be given to a third party, copied or otherwise used without our permission. BROEN-LAB A/S.