

Area of Application:

Wall/Panel mounted
Burning gases

Max. working pressure 0,2 bar

Details:

"Press/turn" safety ceramic headwork open/close 90°
3-Zone colour, acc. to EN13792:2002
Swivel
Fixed nozzle

Materials in media contact:

Brass, CW614N
Rubber, NBR
Lubricant approved for burning gases

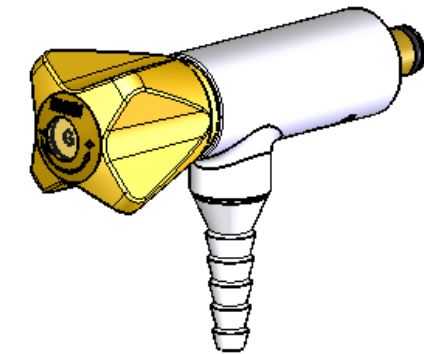
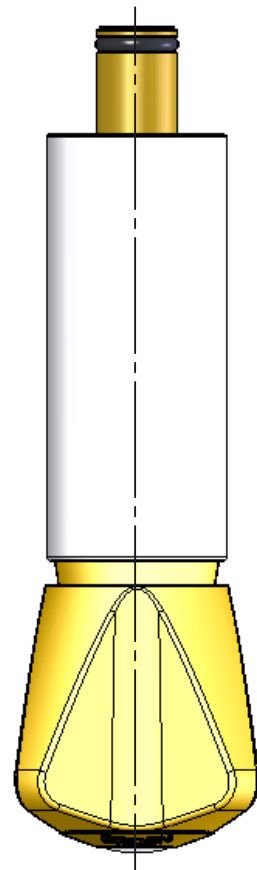
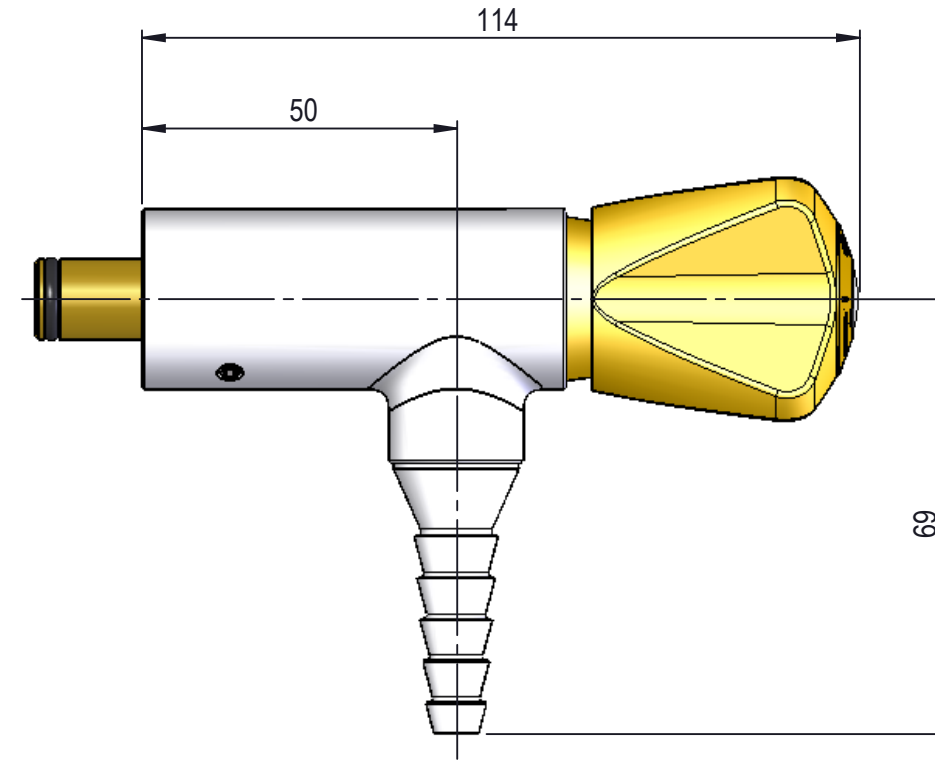
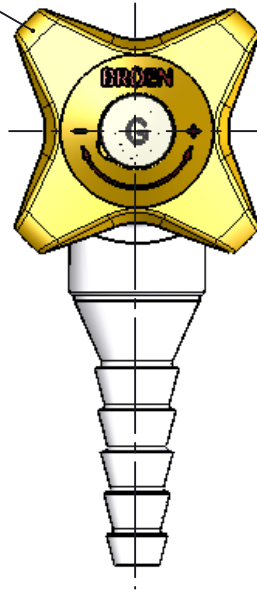
Mounting:

RWC

Inlet / outlet connection:

RWC
DIN 12 898, form A, size 1, 1/2" hose nozzle

Plastic handle



MEDIA CODE XX FOR
BURNING GAS FITTINGS WITH
PRESS / TURN HEADWORK AND
STANDARD HANDLE
ACCORDING TO EN 13792

Media	Media description	Media code XX
G	Natural gas	31
LPG	Propane/butane (liquefied gasses)	32
H ₂	Hydrogen	34

Description: 1-Valve, Wall/Panel mounted, 1-Hole, Fix. Nozzle, RWC

								Media:	Burning gases
								Comments:	
								Drawing type:	Customer drawing
								Weight:	0.381 Kg
Rev.	Pos.	Date	TM No.	Design by	Drawn by:	Change:		Designed by:	BJP
								Drawn by:	MWA
								Released on TM No.	
								Date:	27-02-13
								Format:	A3
								Drawing No.:	253038181XX

BROEN

This drawing is our property and cannot be given to a third party, copied or otherwise used without our permission. BROEN A/S.
Revision 14-01-2011