

Area of Application:

- Vertical mounted.
- Table mounted.
- Maximum working pressure: 10 bar.
- Hot and cold water, temperature range: 5°C - 65°C

Details:

- Ø35 ceramic head work cartridge.
- Cartridge have max. flow & temperature adjustment.
- Opening / closing function: 25°, mixing function: ±45°.
- Red and blue media indication on handle.
- Limited swivel 110°
- Optional : Fully swivel or fixed (to be ordered)

Materials in media contact:

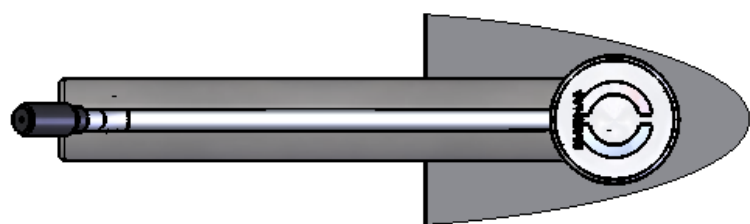
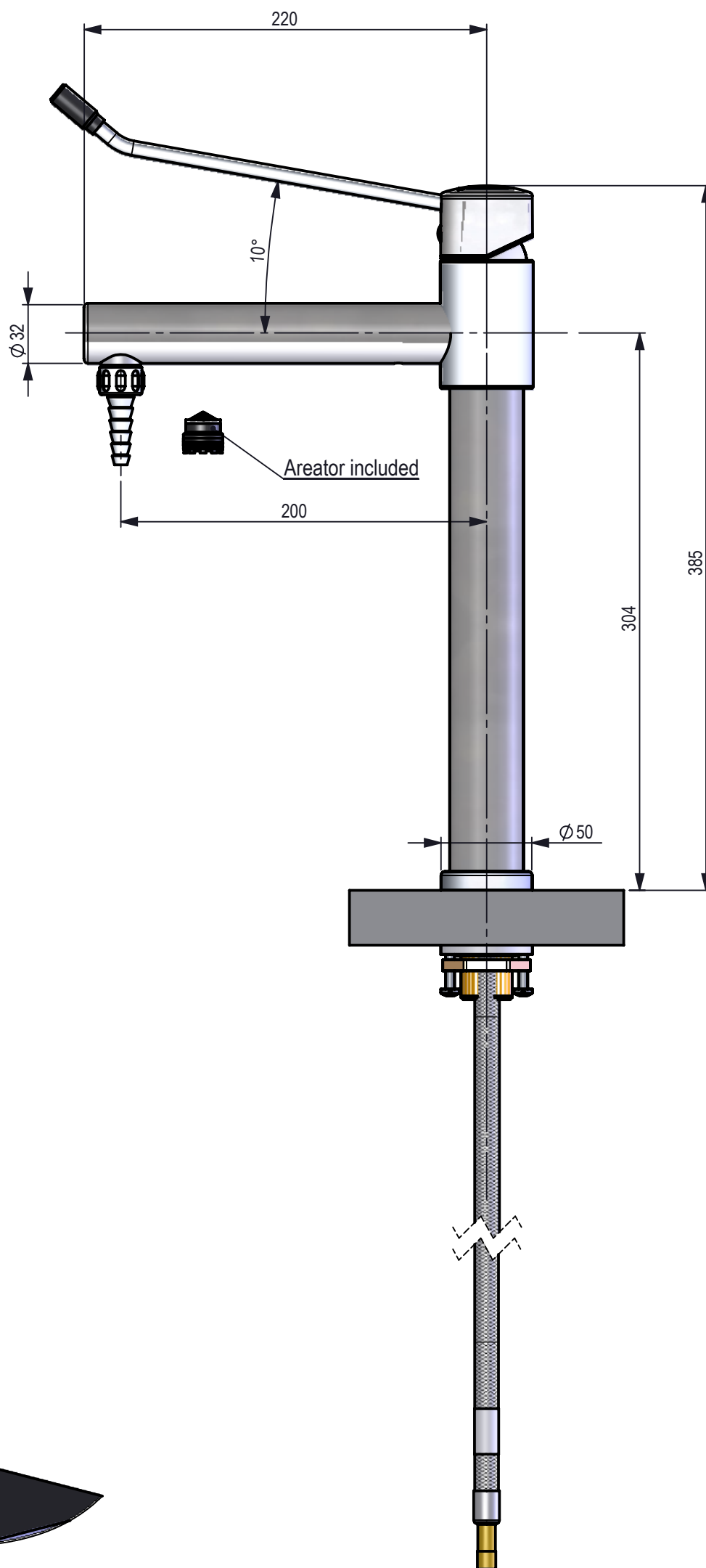
- Brass, CW614N.
- Rubber, EPDM.
- POM, PVC and ABS.
- SPX pipe.
- Cu.
- Silicone based lubricant.
- PP.


Mounting:

- O-ring.
- Washer.
- M28X1.5 nut.

Inlet / outlet connection:

- DN8 hose with Ø10 inlet, (separate inlet for cold and hot water).
- M21,5X1 aerator.



Description:		Bench mounted, one hole, one handle mixer	
Media:		Water	
Material:			
Specification:			
Comments:			
Drawing type:		Customer drawing	Weight: 2,851 Kg
All dimensions maked with  are inspection dimensions			
Unspecified liniar tolerances:		Unspecified angular tolerances:	
Designed by:	Drawn by:	Released on TM No.	Date:
Format:	Drawing No.:		
A3	G350318135C		

Rev.	Pos.	Date	TM No.	Design by	Drawn by:	Change:
BROEN-LAB						This drawing is our property and cannot be given to a third party, copied or otherwise used without our permission. BROEN-LAB A/S.