

Area of Application:
Wall/Panel mounted
Vacuum and Highflow

Max. working pressure 16 bar

Details:
High flow/Vacuum headwork open/close 1,5x360°
3-Zone colour, acc. to EN13792:2002
BROEN-LAB Polyester powder coated colour 2700

Removable nozzle

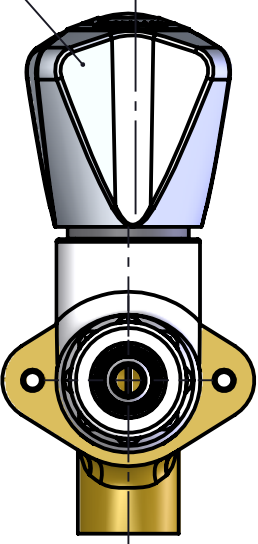
Materials in media contact:

Brass
Rubber, FKM
PP
Perfluoropolyether based lubricant
Nickel plated, Brass
PVDF

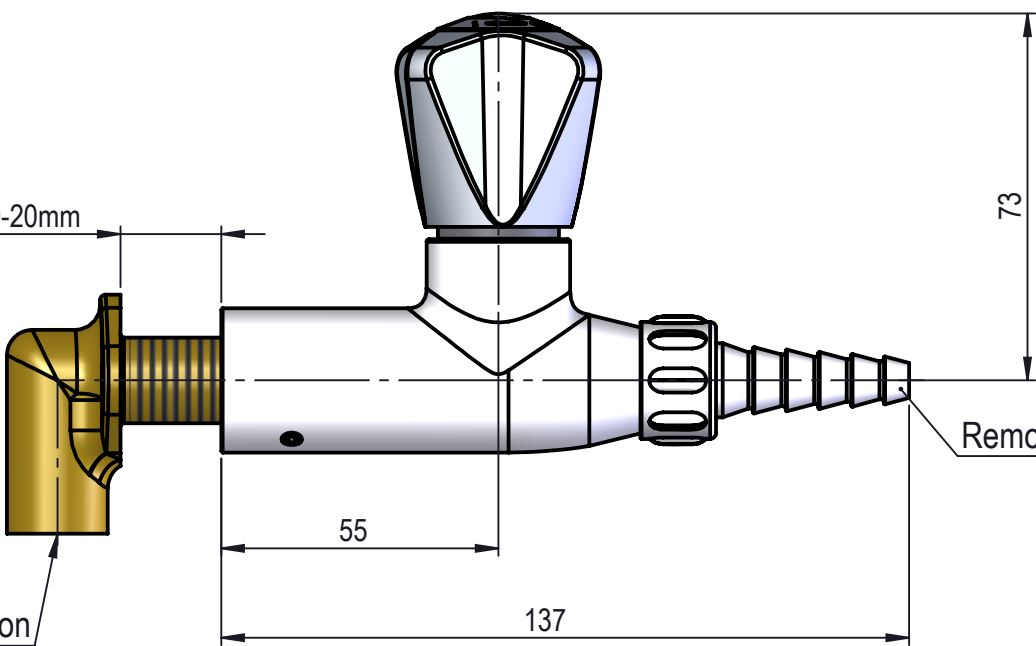
Mounting:
RWC (See 94G0232)

Inlet / outlet connection:
UniFlex
DIN 12 898 hose nozzle

Polypropylene handle

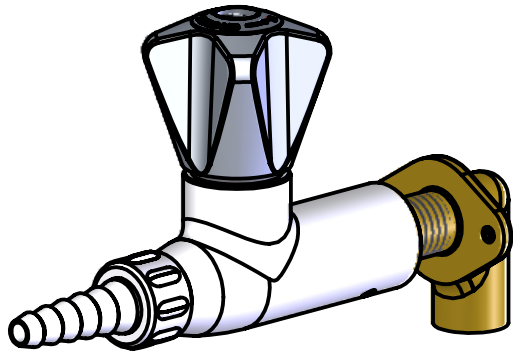
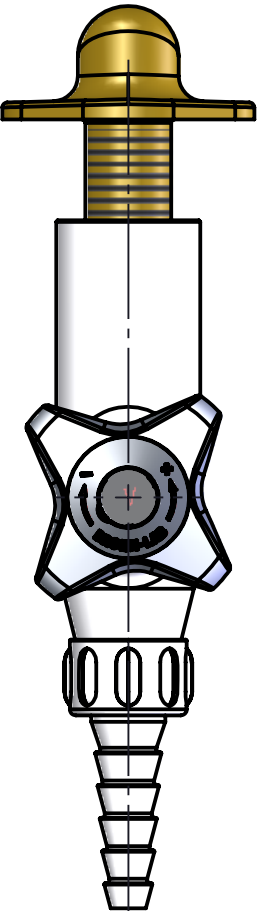


Panel thickness 0-20mm



Removable Polypropylene nozzle

BROEN-LAB UniFlex connection



MEDIA CODE XX FOR VACUUM *Model shown for V		
Media	Media description	Media code XX
V	Vacuum Low	28
VF	Vacuum Fine	29
VH	Vacuum High	30

Description: 1-Valve, Wall/Panel mounted, RWC, Rem. Nozzle, DIN 12 898 hose nozzle									
								Media: Vacuum and Highflow	
								Comments:	
								Drawing type: Customer drawing	
								Weight: 0.613 Kg	
Rev.	Pos.	Date	TM No.	Design by	Drawn by:	Change:		Designed by: VEF	Drawn by: VEF
						Released on TM No.		Date (DD-MM-YY): 30-04-24	
						Format: A3		Drawing No.: 253222510XX-40	

BROEN-LAB

This drawing is our property and cannot be given to a third party, copied or otherwise used without our permission. BROEN-LAB A/S.