

Area of Application:
Panel mounted
Burning gases

Max. working pressure 7 bar

Details:
"Press/turn" safety ceramic headwork open/close 90°
3-Zone colour, acc. to EN13792:2002

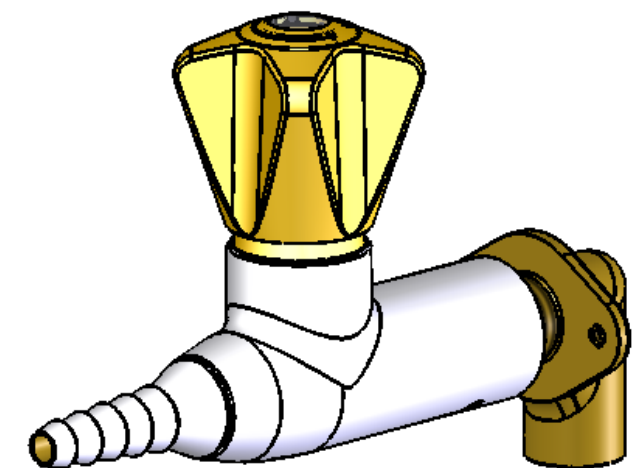
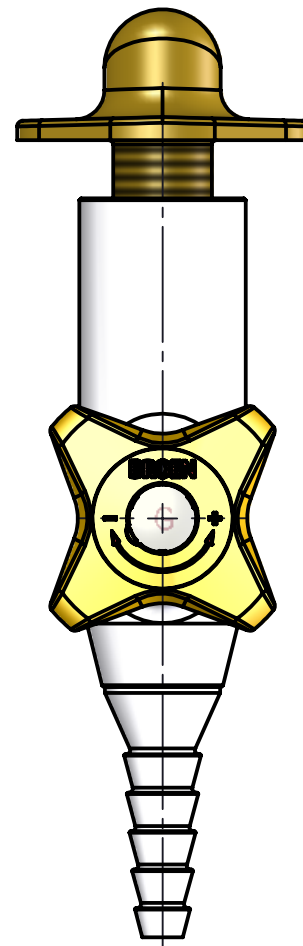
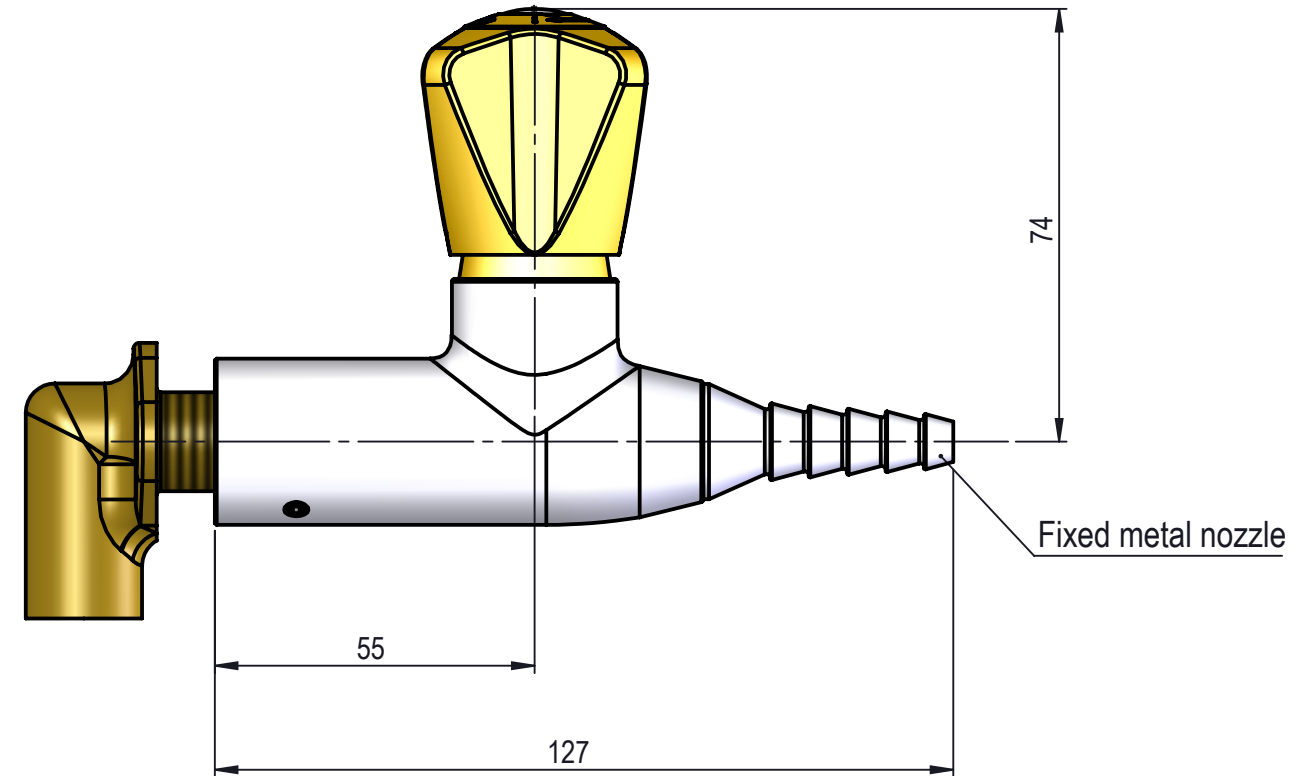
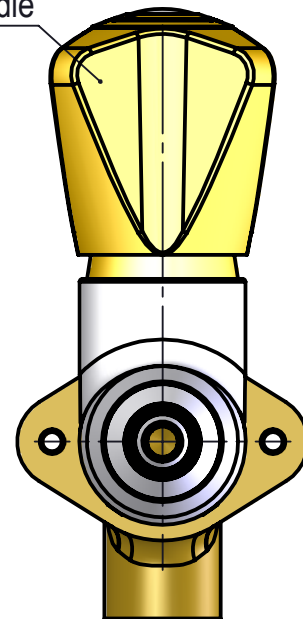
Fixed nozzle

Materials in media contact:
Brass
Mineral oil based lubricant
Rubber, NBR

Mounting:
RWC

Inlet / outlet connection:
UniFlex
DIN 12 898 hose nozzle

Polypropylene handle



MEDIA CODE XX FOR
BURNING GAS FITTINGS WITH
PRESS / TURN HEADWORK AND
STANDARD HANDLE
ACCORDING TO EN 13792

Media	Media description	Media code XX
G	Natural gas	31
LPG	Propane/butane (liquefied gasses)	32
H ₂	Hydrogen	34
C ₄ H ₁₀	Butane	47
C ₃ H ₈	Propane	48
C ₂ H ₂	Acetylene	49
CH ₄	Methane	50

Description: 1-Valve, Panel mounted, 1-Hole, Fix. Nozzle, UniFlex

								Media:	Burning gases
								Comments:	
								Drawing type:	Customer drawing
								Weight:	0.645 Kg
Rev.	Pos.	Date	TM No.	Design by	Drawn by:	Change:	Designed by:	Drawn by:	Released on TM No.
							BJP	MWA	
									Date:
									15-05-2017
							Format:	Drawing No.:	
							A3		253222381XX-40

BROEN-LAB

This drawing is our property and cannot be given to a third party, copied or otherwise used without our permission. BROEN-LAB A/S.